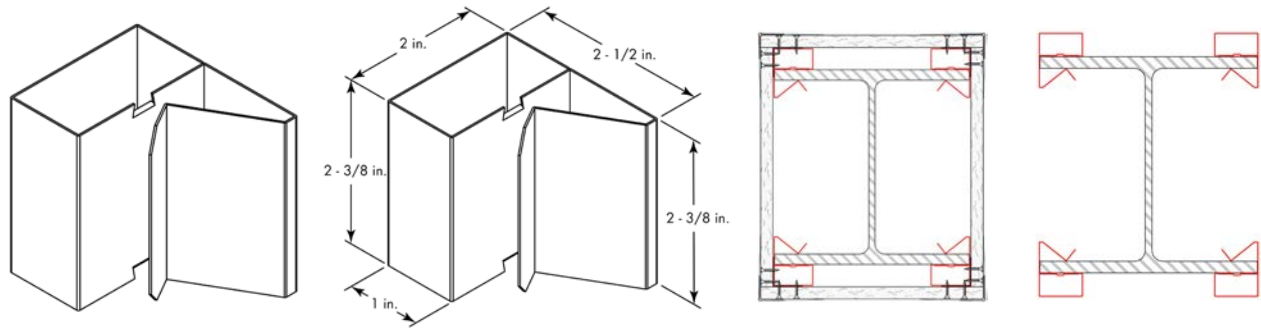


Column and Beam Drywall Clip

Gypsum Board Attachment Device to
Column and Beam Enclosures

GRABBER®
CONSTRUCTION PRODUCTS



Description

Attachment device to secure gypsum board and sheathing to achieve the fire-resistance requirements for column and beam structural members.

Specifications

Size | Gauge: 25 MSG

Material Design Thickness: 0.0180 in.,
0.457 mm

Dimensions: 2 3/8 in. x 2 in. x 2 1/2 in.,
Width x Depth x Height.

Coating: G60 Hot-Dip Galvanized,
0.60 oz/ft², 183 g/m²

Min. Tensile Strength: 39 ksi (270 MPa)

Min. Yield Strength: 33 ksi (227 MPa)

Finish: Galvanized Steel

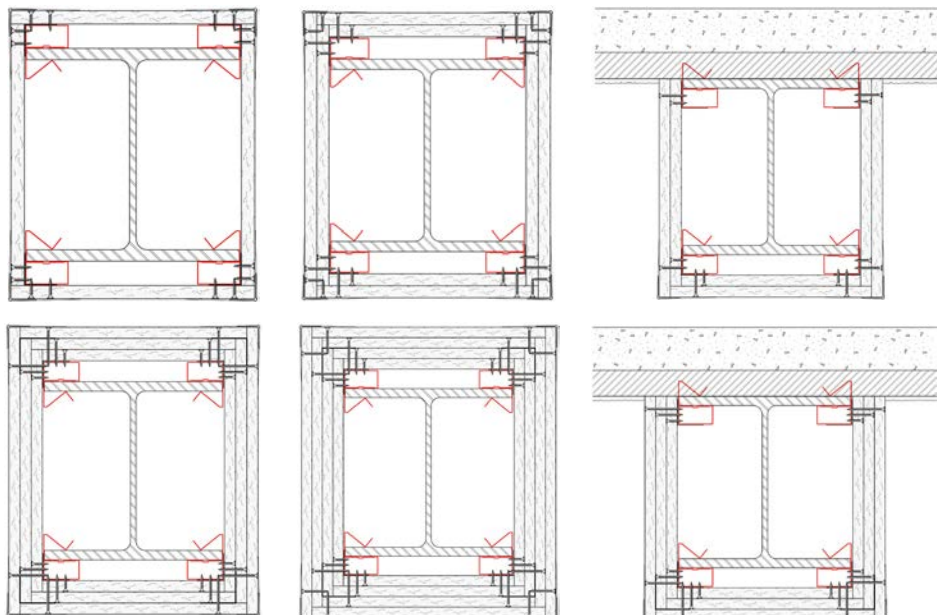
Packaging: 60 per box, 52 per pallet

Compliance: The clip complies with
ASTM A653 and A1003 performance
requirements.

Applications

■ 1 - 4-hour column ratings

■ 2 - 3-hour beam ratings



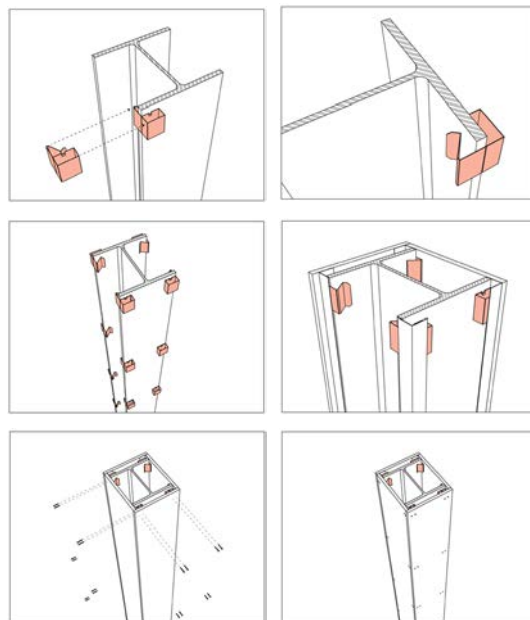
Column and Beam Drywall Clip

Gypsum Board Attachment Device to
Column and Beam Enclosures

GRABBER
CONSTRUCTION PRODUCTS

Installation

- Slide the CB60 clip onto the flanges of the column or beam.
- Space clips 4 ft. O.C. on column flanges and space clips 2 ft. O.C. on beam flanges.
- For column assemblies, place the large flat surface area of the CB60 clip to the outside of the flanges.
- For beam assemblies, place the large flat surface area of the CB60 clip to the outside of the lower flanges and the inside of the top flange.
- Trim first layer of specified gypsum panel to the outside edge of the CB60 clip.
- Gypsum panels shall be cut and positioned such that only one joint terminates at any outside corner, with the subsequent layer overlapping the underlying joint.
- Attach specified gypsum panel with Grabber Type S (fine-thread, self-piercing tapping) screws.
- Finish the assembly with the specified type, thickness, and layers of gypsum wallboard.



Note: Detailed information regarding components and installation can be found in the assembly specifications section.

Features

- Fast and convenient way to wrap columns and beams for fire-resistance requirements.
- Clips are hand applied and friction fit for easy installation.
- PanelMax® panel fabrication equipment enables the creation of prefabricated drywall corners, both on-site and off-site, for columns, beams and other architectural features. With PanelMax®, drywall assemblies can be precisely pre-formed, pre-assembled, and ready for installation when you need them.
- Fewer materials required and fast installation offers significant labor and material savings.
- Large flat surface area for easy fastener penetration and to accept multiple fasteners if needed.

Note: For more information about the innovative PanelMax® systems, please visit www.grabberpro.com/PanelMax

UL Fire-Resistive
Assemblies
Utilizing
the CB60 Clip

Column/Beam	UL Design Nos.	UL Fire Resistance Directory ¹
1 Hour Column	X528	Underwriters Laboratories Inc.
2 Hour Column	X517, X520, X523, X528, X535	
3 Hour Column	X513, X528, X535	
4 Hour Column	X522, X535	
2 Hour Beam	N501, N502	
3 Hour Beam	N505	

¹To look up a specific UL listing, refer to UL's Product iQ™ database, which contains all current fire-resistive assembly listings. Access it at: <https://iq.ulprospector.com>

Column and Beam Drywall Clip

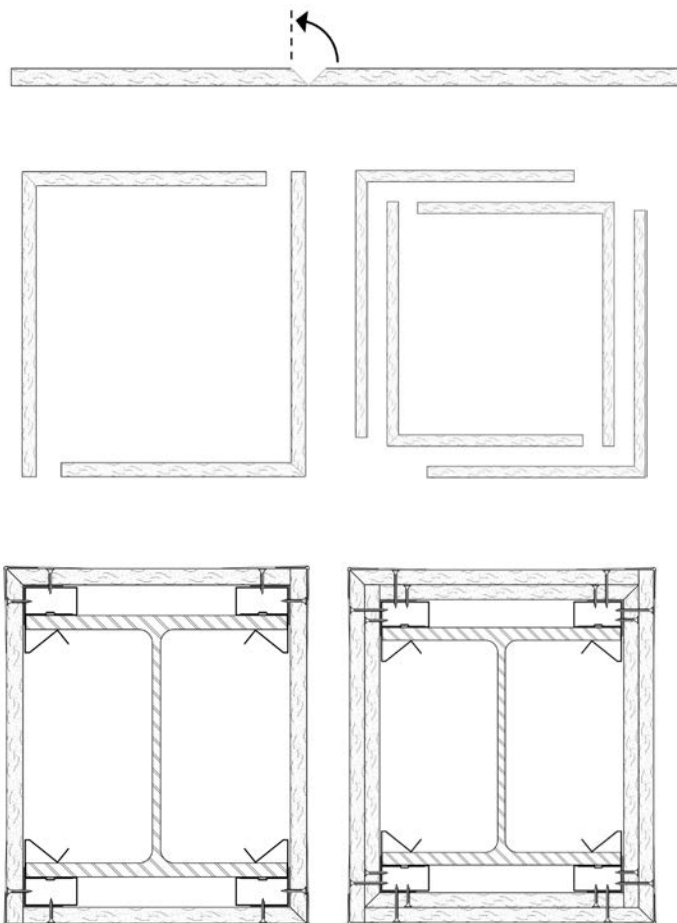
Gypsum Board Fabrication with PanelMax®
Panel Fabrication Equipment

GRABBER®
CONSTRUCTION PRODUCTS

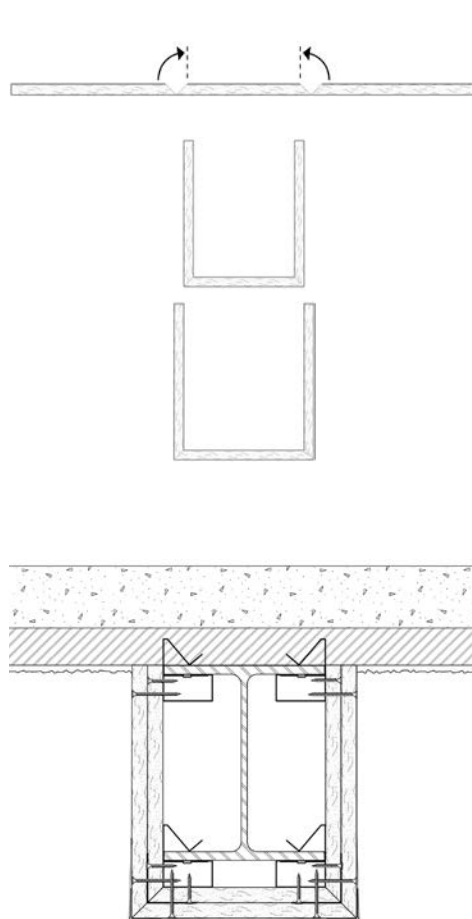
Streamline the creation of column and beam enclosures with Grabber's CB60 clips and PanelMax® advanced panel fabrication technology. This powerful combination allows gypsum panel sections to be precision-milled, pre-assembled, and installation-ready, on your schedule, dramatically boosting productivity and jobsite efficiency.

- Produce finished corners in high-volume batches
- Prefabricate on-site or off-site for clean, efficient installation
- Create precision-milled corners with crisp, finished edges
- Minimize the number and frequency of corner joints

Column Examples



Beam Example



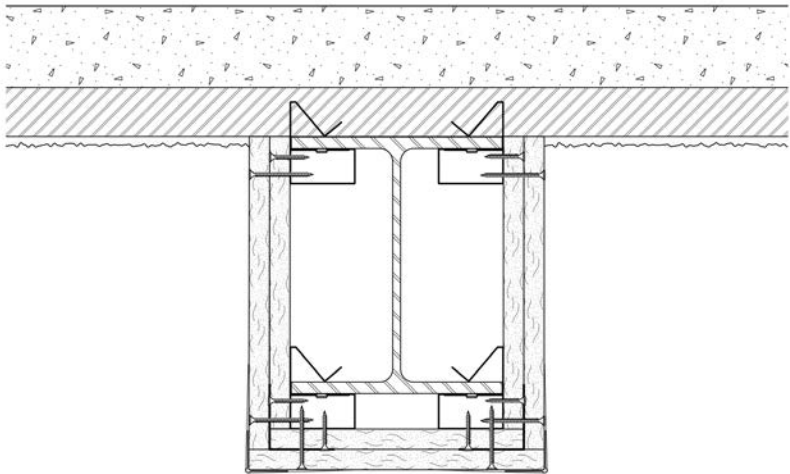
Note: For more information about the innovative PanelMax® systems, or to schedule a product demonstration with a GrabberPro, please visit www.grabberpro.com/PanelMax

Column and Beam Drywall Clip

Gypsum Board Attachment Device to
Column and Beam Enclosures



Beams



UL Fire-
Resistive
Assemblies

Restrained and Unrestrained Beam
Min. W8 x 24 (7 7/8 in. depth x 6 1/2 in. flange width, 1/4 in. web thickness, 3/8 in. flange thickness)

Grabber CB60 Clip Spacing: 24 in. O.C. and at beam ends
Fastener Spacing: 24 in. O.C.

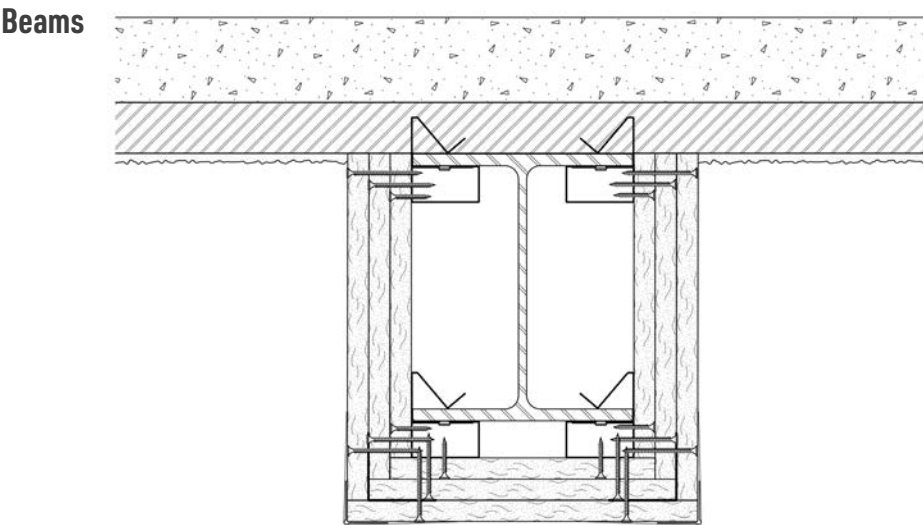
UL Design No.	Fire Resistance Rating	Gypsum Board Layers	Fastener Type	Applicable Grabber Fastener Item No.
N501	2 hour	First layer, 5/8 in. Type X Gypsum Board	1 1/4 in. Type S Screw Fasten gypsum board to steel clips	368, 368S, or 368SV
		Second layer, 5/8 in. Type X Gypsum Board	2 in. Type S Screw Fasten gypsum board to angle and clips	768
N502	2 hour	First layer, 5/8 in. Type X Gypsum Board	1 1/4 in. Type S Screw Fasten gypsum board to steel clips	368, 368S, or 368SV
		Second layer, 5/8 in. Type X Gypsum Board	2 in. Type S Screw Fasten gypsum board to angle and clips	768

Other Assembly Details:

- 2 in. x 2 in. 25 MSG angle.
- Use same 2 in. Grabber screws to attach angle to clips on the bottom portion of the assembly.
- Corner bead (20 MSG, 1 1/4 in. legs with perforated holes.)
- Joint compound 1/32 in. thick on the bottom sides of the wallboard from the corner beads and feathered out.
- Paper tape embedded in the joint compound over the joints with the edges of the compound feathered out.

Column and Beam Drywall Clip

Gypsum Board Attachment Device to
Column and Beam Enclosures



UL Fire-Resistive Assemblies

Restrained and Unrestrained Beam
Min. W8 x 24 (7 7/8 in. depth x 6 1/2 in. flange width, 1/4 in. web thickness, 3/8 in. flange thickness)

Grabber CB60 Clip Spacing: 24 in. O.C. and at beam ends
Fastener Spacing: 24 in. O.C.

UL Design No.	Fire Resistance Rating	Gypsum Board Layers	Fastener Type	Applicable Grabber Fastener Item No.
N505	3 hour (Restrained Beam)	First layer, 5/8 in. Type X Gypsum Board	1 1/4 in. Type S Screw Fasten gypsum board to steel clips	368, 368S, or 368SV
	2 hour (Unrestrained beam)	Middle layer, 5/8 in. Type X Gypsum Board	2 in. Type S Screw Fasten gypsum board to steel clips	768
		Outer layer, 5/8 in. Type X Gypsum Board	2 1/4 in. Type S Screw Fasten gypsum board to angle and clips	868

Other Assembly Details:

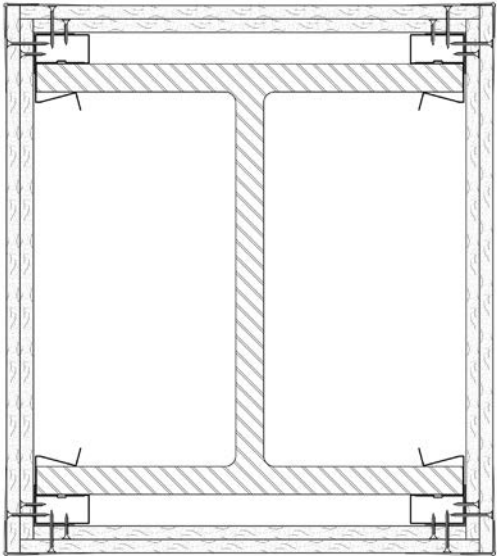
- 2 in. x 2 in. 25 MSG angle.
- Use same 2 in. Grabber screws to attach angle to clips on the bottom portion of the assembly.
- Corner bead (20 MSG, 1 1/4 in. legs with perforated holes.)
- Joint compound 1/32 in. thick on the bottom sides of the wallboard from the corner beads and feathered out.
- Paper tape embedded in the joint compound over the joints with the edges of the compound feathered out.

Column and Beam Drywall Clip

Gypsum Board Attachment Device to
Column and Beam Enclosures



Columns



UL Fire-Resistive Assemblies

Column
Min. W14 x 228 (16 in. depth x 15 7/8 in. flange width, 1 1/16 in. web thickness, 1 11/16 in. flange thickness)

Grabber CB60 Clip Spacing: 48 in. O.C. and 1 1/4 in. from top and bottom of column

UL Design No.	Fire Resistance Rating	Gypsum Board Layers	Fastener Type	Applicable Grabber Fastener Item No.	Fastener Spacing
X513	3 hour	First layer, 1/2 in. Type C Gypsum Board	1 in. Type S Screw Fasten gypsum board to steel clips or angles	168	24 in. O.C.
		Second layer, 1/2 in. Type C Gypsum Board	1 5/8 in. Type S Screw Fasten gypsum board to angle and clips	468	12 in. O.C.

Other Assembly Details:

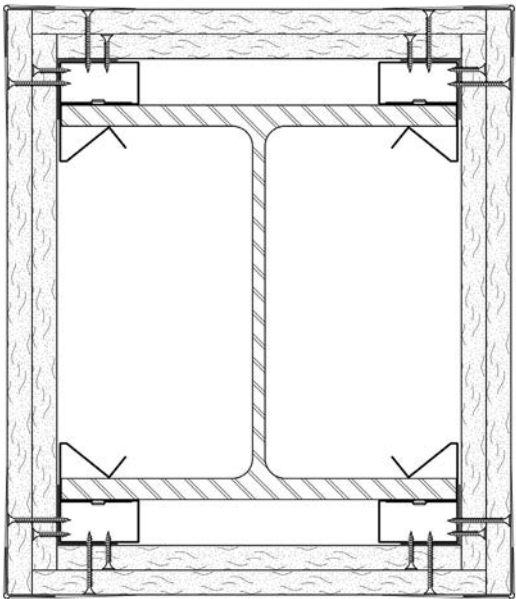
- Boards are applied vertically without horizontal joints.
- 1 1/4 in. x 1 1/4 in. 28 MSG angle laid in place over clip. (Angle cut 1 in. less than the assembly height.)
- Corner bead (0.058 in. thick at shoulder thickness, 1 7/8 in. legs, attached to gypsum board using all-purpose ready mix joint compound.)
- Joint compound 1/32 in. thick on the bottom sides of the wallboard from the corner beads and feathered out.

Column and Beam Drywall Clip

Gypsum Board Attachment Device to
Column and Beam Enclosures



Columns



UL Fire-
Resistive
Assemblies

Column

Min. W10 x 49 (10 in. depth x 10 in. flange width, 5/16 in. web thickness, 9/16 in. flange thickness)

Grabber CB60 Clip Spacing: 48 in. O.C. and 1 1/4 in. from top and bottom of column

UL Design No.	Fire Resistance Rating	Gypsum Board Layers	Fastener Type	Applicable Grabber Fastener Item No.
X517	2 hour	First layer, 5/8 in. Type X Gypsum Board	1 in. Type S Screw Fasten gypsum board to steel clips or angles	168
		Second layer, 5/8 in. Type X Gypsum Board	1 5/8 in. Type S Screw Fasten gypsum board to angle and clips	468

Other Assembly Details:

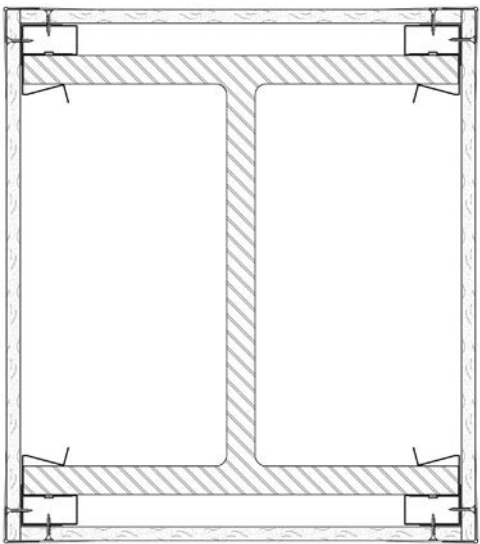
- Boards are applied vertically without horizontal joints.
- 1 1/4 in. x 1 1/4 in. 28 MSG angle laid in place over clip. Angle cut 1 in. less than the assembly height.)
- Corner bead (25 MSG galvanized steel, 1 1/4 in. legs. Attached to gypsum board using all-purpose ready mix joint compound.)
- Joint compound 1/32 in. thick on the bottom sides of the wallboard from the corner beads and feathered out.

Column and Beam Drywall Clip

Gypsum Board Attachment Device to
Column and Beam Enclosures



Columns



UL Fire-
Resistive
Assemblies

Column

Min. W14 x 228 (16 in. depth x 15 7/8 in. flange width, 1 1/16 in. web thickness, 1 11/16 in. flange thickness)

Grabber CB60 Clip Spacing: 48 in. O.C. and 1 1/4 in. from top and bottom of column

UL Design No.	Fire Resistance Rating	Gypsum Board Layers	Fastener Type	Applicable Grabber Fastener Item No.	Fastener Spacing
X520	2 hour	One layer, 1/2 in. Type C Gypsum Board	1 in. Type S Screw Fasten gypsum board to steel clips or angles	168	12 in. O.C.

Other Assembly Details:

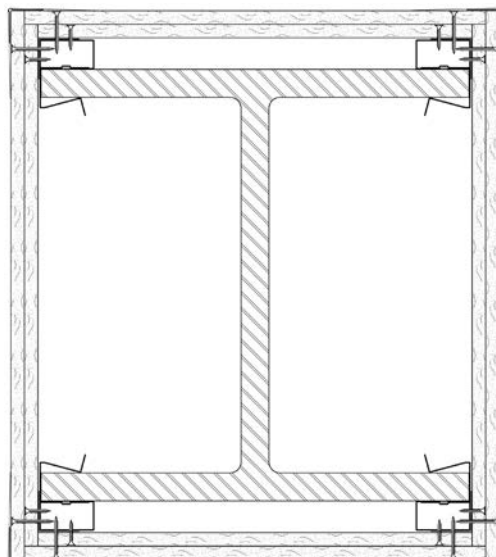
- Boards are applied vertically without horizontal joints.
- 1 1/4 in. x 1 1/4 in. 28 MSG angle laid in place over clip. (Angle cut 1 in. less than the assembly height.)
- Corner bead (28 MSG galvanized steel, 1 1/4 in. legs. Attached to gypsum board using all-purpose ready mix joint compound.)
- Joint compound 1/32 in. thick on the bottom sides of the wallboard from the corner beads and feathered out.

Column and Beam Drywall Clip

Gypsum Board Attachment Device to
Column and Beam Enclosures

GRABBER®
CONSTRUCTION PRODUCTS

Columns



UL Fire-
Resistive
Assemblies

Column

Min. W14 x 228 (16 in. depth x 15 7/8 in. flange width, 1 1/16 in. web thickness, 1 11/16 in. flange thickness)

Grabber CB60 Clip Spacing: 48 in. O.C. and 1 1/4 in. from top and bottom of column

UL Design No.	Fire Resistance Rating	Gypsum Board Layers	Fastener Type	Applicable Grabber Fastener Item No.	Fastener Spacing
X522	4 hour	First layer, 1/2 in. Type C Gypsum Board	1 in. Type S Screw Fasten gypsum board to steel clips or angles	168	12 in. O.C.
		Second layer, 1/2 in. Type C Gypsum Board	1 5/8 in. Type S Screw Fasten gypsum board to angle and clips	468	12 in. O.C.

Other Assembly Details:

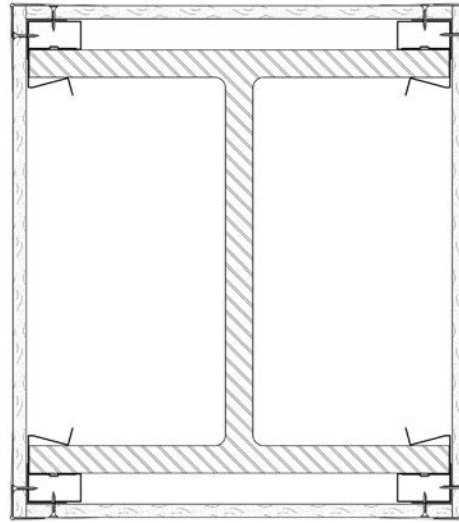
- Boards are applied vertically without horizontal joints.
- 1 1/4 in. x 1 1/4 in. 28 MSG angle laid in place over clip. Angle cut 1 in. less than the assembly height.)
- Corner bead (26 MSG galvanized steel, 1 1/4 in. legs. Attached to gypsum board using all-purpose ready mix joint compound.)
- Joint compound 1/32 in. thick on the bottom sides of the wallboard from the corner beads and feathered out.

Column and Beam Drywall Clip

Gypsum Board Attachment Device to
Column and Beam Enclosures

GRABBER
CONSTRUCTION PRODUCTS

Columns



UL Fire-
Resistive
Assemblies

Column

Min. W14 x 228 (16 in. depth x 15 7/8 in. flange width, 1 1/16 in. web thickness, 1 11/16 in. flange thickness)

Grabber CB60 Clip Spacing: 48 in. O.C. and 1 1/4 in. from top and bottom of column

UL Design No.	Fire Resistance Rating	Gypsum Board Layers	Fastener Type	Applicable Grabber Fastener Item No.	Fastener Spacing
X523	2 hour	One layer, 1/2 in. Type C Gypsum Board	1 in. Type S Screw Fasten gypsum board to steel clips or angles	168	12 in. O.C.

Other Assembly Details:

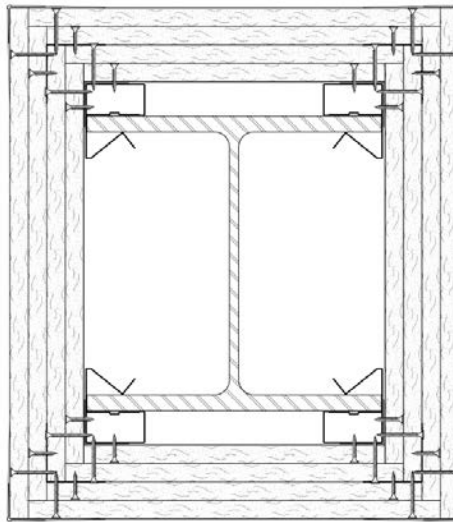
- Boards are applied vertically without horizontal joints.
- 1 1/4 in. x 1 1/4 in. 28 MSG angle laid in place over clip. (Angle cut 1 in. less than the assembly height.)
- Corner bead (26 MSG galvanized steel, 1 1/4 in. legs. Attached to gypsum board using all-purpose ready mix joint compound.)
- Joint compound 1/32 in. thick on the bottom sides of the wallboard from the corner beads and feathered out.

Column and Beam Drywall Clip

Gypsum Board Attachment Device to
Column and Beam Enclosures

GRABBER®
CONSTRUCTION PRODUCTS

Columns



UL Fire-
Resistive
Assemblies

Column

Min. W10 x 49 (10 in. depth x 10 in. flange width, 5/16 in. web thickness, 9/16 in. flange thickness)

Grabber CB60 Clip Spacing: 48 in. O.C. and 1 1/4 in. from top and bottom of column

UL Design No.	Fire Resistance Rating	Gypsum Board Layers	Fastener Type	Applicable Grabber Fastener Item No.	Fastener Spacing
X535	4 hour	First layer, 5/8 in. Type X Gypsum Board	1 in. Type S Screw Fasten gypsum board to steel clips or angles	168	12 in. O.C.
		Second layer, 5/8 in. Type X Gypsum Board	1 5/8 in. Type S Screw Fasten gypsum board to steel clips or angles	468	12 in. O.C.
		Third layer, 5/8 in. Type X Gypsum Board	1 in. Type S Screw Fasten gypsum board to steel angles	168	12 in. O.C.
		Fourth layer, 5/8 in. Type X Gypsum Board	1 5/8 in. Type S Screw Fasten gypsum board to steel angles	468	12 in. O.C.

Other Assembly Details:

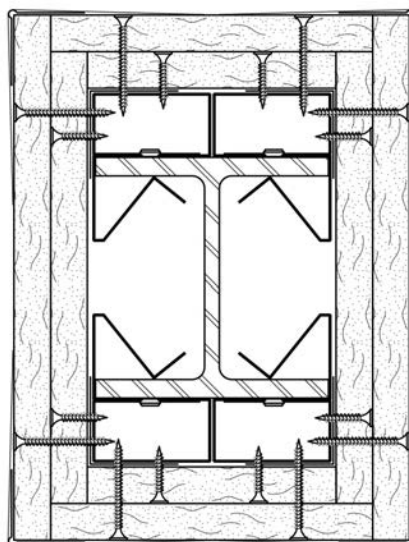
- Boards are applied vertically without horizontal joints.
- 1 1/4 in. x 1 1/4 in. 28 MSG angle laid in place over clip. (Angle cut 1 in. less than the assembly height.)
- 2 in. x 2 in. 25 MSG steel angle installed on the corners of the second layer of gypsum board, and screw attached through the first and second layers of gypsum board in the first 1 1/4 in. x 1 1/4 in. 28 MSG angle laid in place over the clip.
- Corner bead (26 MSG galvanized steel, 1 1/4 in. legs. Attached to gypsum board using all-purpose ready mix joint compound.)
- Joint compound 1/32 in. thick on the bottom sides of the wallboard from the corner beads and feathered out.
- Third and fourth layer of wallboard to attach to 2 in. x 2 in. 25 MSG steel angle installed outside of the second layer of gypsum board.

Column and Beam Drywall Clip

Gypsum Board Attachment Device to
Column and Beam Enclosures

GRABBER®
CONSTRUCTION PRODUCTS

Columns



UL Fire-
Resistive
Assemblies

Column

Min. W4 x 13 (4 in. depth, 4 in. flange width, 1/4 in. web thickness, 3/8 in. flange thickness)

Grabber CB60 Clip Spacing: 48 in. O.C. and 1 1/4 in. from top and bottom of column

UL Design No.	Fire Resistance Rating	Gypsum Board Layers	Fastener Type	Applicable Grabber Fastener Item No.	Fastener Spacing
X528	1 hour	First layer, 1/2 in. Type C or 5/8 in. Type X Gypsum Board	1 in. Type S Screw Fasten gypsum board to steel clips or angles	168	24 in. O.C.
		Second layer, 1/2 in. Type C or 5/8 in. Type X Gypsum Board	1 3/4 in. Type S Screw Fasten gypsum board to steel clips or angles	568	12 in. O.C.

*1 in. min. total thickness of gypsum layers

Other Assembly Details:

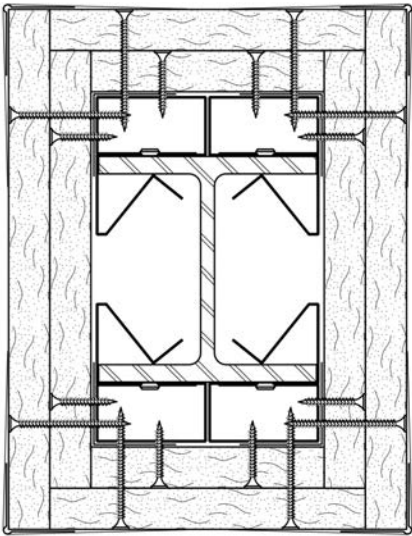
- Boards are applied vertically without horizontal joints.
- 1 1/4 in. x 1 1/4 in. 28 MSG angle laid in place over clip. (Angle cut 1 in. less than the assembly height. Secure angle with screw attaching the wallboard.)
- Splices in angle to occur over clips.
- Corner bead (0.058 in. thick at shoulder thickness, 1 7/8 in. legs attached to gypsum board using all-purposeready mix joint compound.)
- Joint compound 1/16 in. thick to cover the corner beads and feathered out.

Column and Beam Drywall Clip

Gypsum Board Attachment Device to
Column and Beam Enclosures



Columns



UL Fire-
Resistive
Assemblies

Column

Min. W x 13 (4 in. depth, 4 in. flange width, 1/4 in. web thickness, 3/8 in. flange thickness)

Grabber CB60 Clip Spacing: 48 in. O.C. and 1 1/4 in. from top and bottom of column

UL Design No.	Fire Resistance Rating	Gypsum Board Layers	Fastener Type	Applicable Grabber Fastener Item No.	Fastener Spacing
X528	2 hour	First layer, 3/4 in. Gypsum Board	1 1/4 in. Type S Screw Fasten gypsum board to steel clips or angles	368	24 in. O.C.
		Second layer, 3/4 in. Gypsum Board	2 1/4 in. Type S Screw Fasten gypsum board to steel clips or angles	868	12 in. O.C.

*1 1/2 in. min. total thickness of gypsum layers

Other Assembly Details:

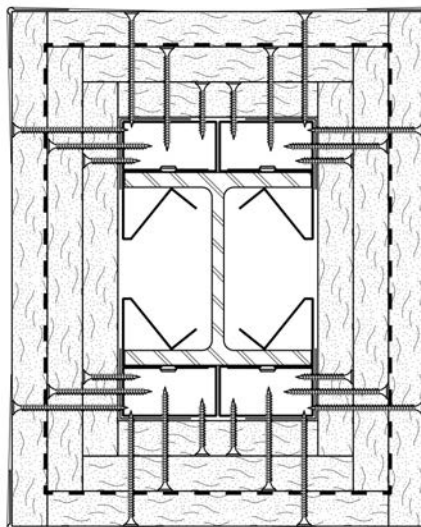
- Boards are applied vertically without horizontal joints.
- 1 1/4 in. x 1 1/4 in. 28 MSG angle laid in place over clip. (Angle cut 1 in. less than the assembly height. Secure angle with screw attaching the wallboard.)
- Splices in angle to occur over clips.
- Corner bead (0.058 in. thick at shoulder thickness, 1 7/8 in. legs attached to gypsum board using all-purpose ready mix joint compound.)
- Joint compound 1/16 in. thick to cover the corner beads and feathered out.

Column and Beam Drywall Clip

Gypsum Board Attachment Device to
Column and Beam Enclosures

GRABBER®
CONSTRUCTION PRODUCTS

Columns



UL Fire-
Resistive
Assemblies

Column

Min. W4 x 13 (4 in. depth, 4 in. flange width, 1/4 in. web thickness, 3/8 in. flange thickness)

Grabber CB60 Clip Spacing: 48 in. O.C. and 1 1/4 in. from top and bottom of column

UL Design No.	Fire Resistance Rating	Gypsum Board Layers	Fastener Type	Applicable Grabber Fastener Item No.	Fastener Spacing
X528	2 hour	First layer, 1/2 in. Type C Gypsum Board	1 in. Type S Screw Fasten gypsum board to steel clips or angles	168	24 in. O.C.
		Second layer, 1/2 in. Type C Gypsum Board	1 3/4 in. Type S Screw Fasten gypsum board to steel clips or angles	568	12 in. O.C.
		Third layer, 1/2 in. Type C Gypsum Board	2 1/4 in. Type S Screw Fasten gypsum board to steel clips or angles	968	12 in. O.C.

*1 1/2 in. min. total thickness of gypsum layers

Other Assembly Details:

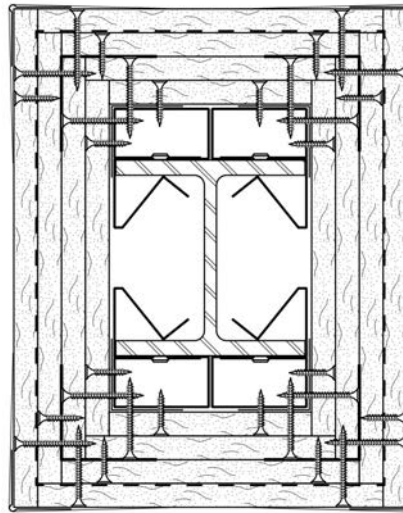
- Boards are applied vertically without horizontal joints.
- 1 1/4 in. x 1 1/4 in. 28 MSG angle laid in place over clip. (Angle cut 1 in. less than the assembly height. Secure angle with screw attaching the wallboard.)
- Splices in angle to occur over clips.
- Corner bead (0.058 in. thick at shoulder thickness, 1 7/8 in. legs attached to gypsum board using all-purpose ready mix joint compound.)
- Joint compound 1/16 in. thick to cover the corner beads and feathered out.
- Tie Wire, no. 18 SWG steel wire spaced 24 in. O.C. wrapped around the second layer of gypsum board.

Column and Beam Drywall Clip

Gypsum Board Attachment Device to
Column and Beam Enclosures

GRABBER®
CONSTRUCTION PRODUCTS

Columns



UL Fire-
Resistive
Assemblies

Column

Min. W4 x 13 (4 in. depth, 4 in. flange width, 1/4 in. web thickness, 3/8 in. flange thickness)

Grabber CB60 Clip Spacing: 48 in. O.C. and 1 1/4 in. from top and bottom of column

UL Design No.	Fire Resistance Rating	Gypsum Board Layers	Fastener Type	Applicable Grabber Fastener Item No.	Fastener Spacing
X528	3 hour	First layer, 1/2 in. Type C or 5/8 in. Type X Gypsum Board	1 in. Type S Screw Fasten gypsum board to steel clips or angles	168	24 in. O.C.
		Second layer, 1/2 in. Type C or 5/8 in. Type X Gypsum Board	1 3/4 in. Type S Screw Fasten gypsum board to steel clips or angles	568	12 in. O.C.
		Third layer, 1/2 in. Type C or 5/8 in. Type X Gypsum Board	1 in. Type S Screw Fasten gypsum board to steel angles	168	24 in. O.C.
		Fourth layer, 1/2 in. Type C or 5/8 in. Type X Gypsum Board	1 3/4 in. Type S Screw Fasten gypsum board to steel angles	568	12 in. O.C.

*2 1/4 in. min. total thickness of gypsum layers

Other Assembly Details:

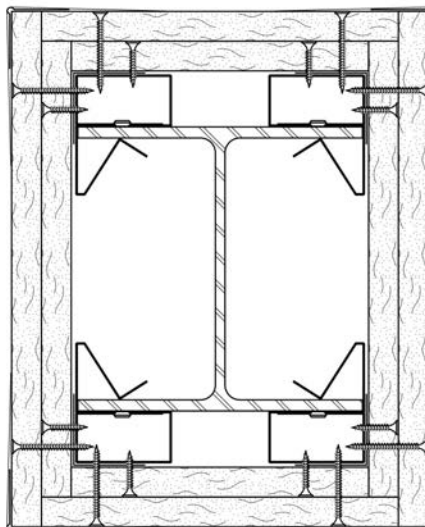
- Boards are applied vertically without horizontal joints.
- 1 1/4 in. x 1 1/4 in. 28 MSG angle laid in place over clip. (Angle cut 1 in. less than the assembly height. Secure angle with screw attaching the wallboard.)
- Splices in angle to occur over clips.
- 2 in. x 2 in. 25 MSG steel angle installed on the corners of the second layer of gypsum board, and screw attached through the first and second layers of gypsum board into the first 1 1/4 in. x 1 1/4 in. 28 MSG angle laid in place over the CB60 clip.
- Corner bead (0.058 in. thick at shoulder thickness, 1 7/8 in. legs attached to gypsum board using all-purpose ready mix joint compound.)
- Joint compound 1/16 in. thick to cover the corner beads and feathered out.
- Tie Wire, no. 18 SWG steel wire spaced 24 in. O.C. wrapped around the third layer of gypsum board.
- Third and fourth layer of wallboard to attach to 2 in. x 2 in. 25 MSG steel angle installed outside of the second layer of gypsum board.

Column and Beam Drywall Clip

Gypsum Board Attachment Device to
Column and Beam Enclosures

GRABBER
CONSTRUCTION PRODUCTS

Columns



UL Fire-
Resistive
Assemblies

Column

Min. W6 x 15.5 (6 in. depth, 15 1/2 in. flange width, 1/4 in. web thickness, 1/4 in. flange thickness)

Grabber CB60 Clip Spacing: 48 in. O.C. and 1 1/4 in. from top and bottom of column

UL Design No.	Fire Resistance Rating	Gypsum Board Layers	Fastener Type	Applicable Grabber Fastener Item No.	Fastener Spacing
X528	1 hour	First layer, 1/2 in. Type C or 5/8 in. Type X Gypsum Board	1 in. Type S Screw Fasten gypsum board to steel clips or angles	168	24 in. O.C.
		Second layer, 1/2 in. Type C or 5/8 in. Type X Gypsum Board	1 3/4 in. Type S Screw Fasten gypsum board to steel clips or angles	568	12 in. O.C.

*1 in. min. total thickness of gypsum layers

Other Assembly Details:

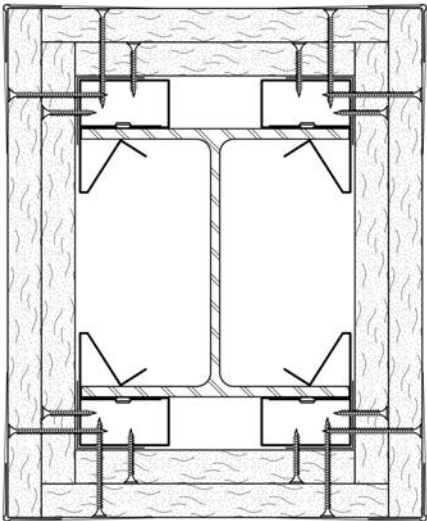
- Boards are applied vertically without horizontal joints.
- 1 1/4 in. x 1 1/4 in. 28 MSG angle laid in place over clip. Angle cut 1 in. less than the assembly height. Secure angle with screw attaching the wallboard.)
- Splices in angle to occur over clips.
- Corner bead (0.058 in. thick at shoulder thickness, 1 7/8 in. legs attached to gypsum board using all-purpose ready mix joint compound.)
- Joint compound 1/16 in. thick to cover the corner beads and feathered out.

Column and Beam Drywall Clip

Gypsum Board Attachment Device to
Column and Beam Enclosures



Columns



UL Fire-Resistive Assemblies

Column

Min. W6 x 15.5 (6 in. depth, 15 1/2 in. flange width, 1/4 in. web thickness, 1/4 in. flange thickness)

Grabber CB60 Clip Spacing: 48 in. O.C. and 1 1/4 in. from top and bottom of column

UL Design No.	Fire Resistance Rating	Gypsum Board Layers	Fastener Type	Applicable Grabber Fastener Item No.	Fastener Spacing
X528	2 hour	First layer, 3/4 in. Gypsum Board	1 1/4 in. Type S ScrewFasten gypsum board to steel clips or angles	368	24 in. O.C.
		Second layer, 3/4 in Gypsum board	2 1/4 in. Type S ScrewFasten gypsum board to steel clips or angles	868	12 in. O.C.

*1 1/2 in. min. total thickness of gypsum layers

Other Assembly Details:

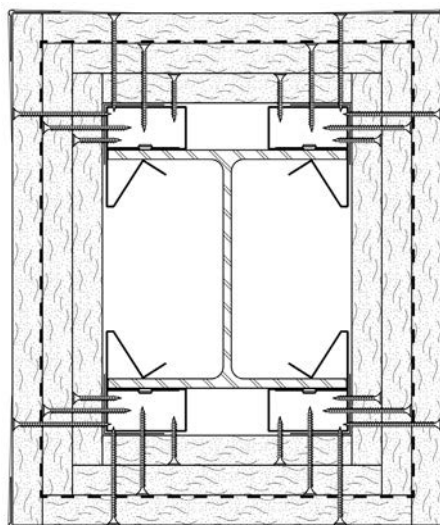
- Boards are applied vertically without horizontal joints.
- 1 1/4 in. x 1 1/4 in. 28 MSG angle laid in place over clip. (Angle cut 1 in. less than the assembly height. Secure angle with screw attaching the wallboard.)
- Splices in angle to occur over clips.
- Corner bead (0.058 in. thick at shoulder thickness, 1 7/8 in. legs attached to gypsum board using all-purpose ready mix joint compound.)
- Joint compound 1/16 in. thick to cover the corner beads and feathered out.

Column and Beam Drywall Clip

Gypsum Board Attachment Device to
Column and Beam Enclosures

GRABBER
CONSTRUCTION PRODUCTS

Columns



UL Fire-
Resistive
Assemblies

Column

Min. W6 x 15.5 (6 in. depth, 15 1/2 in. flange width, 1/4 in. web thickness, 1/4 in. flange thickness)

Grabber CB60 Clip Spacing: 48 in. O.C. and 1 1/4 in. from top and bottom of column

UL Design No.	Fire Resistance Rating	Gypsum Board Layers	Fastener Type	Applicable Grabber Fastener Item No.	Fastener Spacing
X528	2 hour	First layer, 1/2 in. Type C Gypsum Board	1 in. Type S Screw Fasten gypsum board to steel clips or angles	168	24 in. O.C.
		Second layer, 1/2 in. Type C Gypsum Board	1 3/4 in. Type S Screw Fasten gypsum board to steel clips or angles	568	12 in. O.C.
		Third layer, 1/2 in. Type C Gypsum Board	2 1/4 in. Type S Screw Fasten gypsum board to steel clips or angles	968	12 in. O.C.

*1 1/2 in. min. total thickness of gypsum layers

Other Assembly Details:

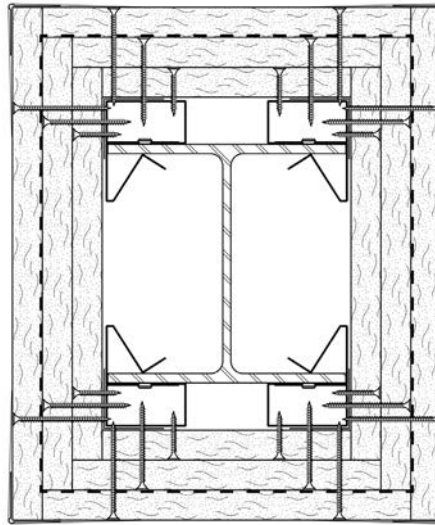
- Boards are applied vertically without horizontal joints.
- 1 1/4 in. x 1 1/4 in. 28 MSG angle laid in place over clip. (Angle cut 1 in. less than the assembly height. Secure angle with screw attaching the wallboard.)
- Splices in angle to occur over clips.
- Corner bead (0.058 in. thick at shoulder thickness, 1 7/8 in. legs attached to gypsum board using all-purpose ready mix joint compound.)
- Joint compound 1/16 in. thick to cover the corner beads and feathered out.
- Tie Wire, no. 18 SWG steel wire spaced 24 in. O.C. wrapped around second layer of gypsum board.

Column and Beam Drywall Clip

Gypsum Board Attachment Device to
Column and Beam Enclosures

GRABBER®
CONSTRUCTION PRODUCTS

Columns



UL Fire-
Resistive
Assemblies

Column

Min. W6 x 15.5 (6 in. depth, 15 1/2 in. flange width, 1/4 in. web thickness, 1/4 in. flange thickness)

Grabber CB60 Clip Spacing: 48 in. O.C. and 1 1/4 in. from top and bottom of column

UL Design No.	Fire Resistance Rating	Gypsum Board Layers	Fastener Type	Applicable Grabber Fastener Item No.	Fastener Spacing
X528	3 hour	First layer, 3/4 in. Gypsum Board	1 1/4 in. Type S Screw Fasten gypsum board to steel clips or angles	368	24 in. O.C.
		Second layer, 3/4 in. Gypsum Board	6 x 2 1/4 in. Type S Screw Fasten gypsum board to steel clips or angles	868	12 in. O.C.
		Third layer, 3/4 in. Gypsum Board	8 x 2 1/4 in. Type S Screw Fasten gypsum board to steel clips or angles	968	12 in. O.C.

*2 1/4 in. min. total thickness of gypsum layers

Other Assembly Details:

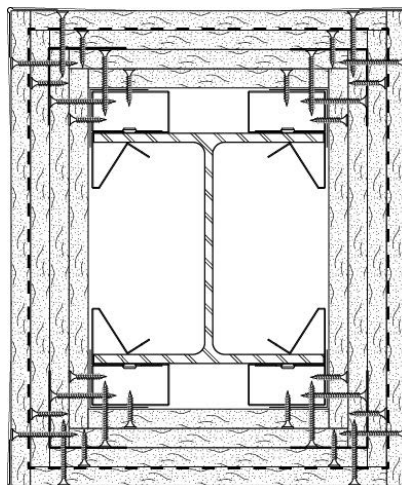
- Boards are applied vertically without horizontal joints.
- 1 1/4 in. x 1 1/4 in. 28 MSG angle laid in place over clip. (Angle cut 1 in. less than the assembly height. Secure angle with screw attaching the wallboard.)
- Splices in angle to occur over clips.
- Corner bead (0.058 in. thick at shoulder thickness, 1 7/8 in. legs attached to gypsum board using all-purpose ready mix joint compound.)
- Joint compound 1/16 in. thick to cover the corner beads and feathered out.
- Tie Wire, no. 18 SWG steel wire spaced 24 in. O.C. wrapped around second layer of gypsum board.

Column and Beam Drywall Clip

Gypsum Board Attachment Device to
Column and Beam Enclosures

GRABBER
CONSTRUCTION PRODUCTS

Columns



UL Fire-
Resistive
Assemblies

Column

Min. W6 x 15.5 (6 in. depth, 15 1/2 in. flange width, 1/4 in. web thickness, 1/4 in. flange thickness)

Grabber CB60 Clip Spacing: 48 in. O.C. and 1 1/4 in. from top and bottom of column

UL Design No.	Fire Resistance Rating	Gypsum Board Layers	Fastener Type	Applicable Grabber Fastener Item No.	Fastener Spacing
X528	3 hour	First layer, 1/2 in. Type C or 5/8 in. Type X Gypsum Board	1 in. Type S Screw Fasten gypsum board to steel clips or angles	168	24 in. O.C.
		Second layer, 1/2 in. Type C or 5/8 in. Type X Gypsum Board	1 3/4 in. Type S Screw Fasten gypsum board to steel clips or angles	568	12 in. O.C.
		Third layer, 1/2 in. Type C or 5/8 in. Type X Gypsum Board	1 in. Type S Screw Fasten gypsum board to steel angle	168	24 in. O.C.
		Fourth layer, 1/2 in. Type C or 5/8 in. Type X Gypsum Board	1 3/4 in. Type S Screw Fasten gypsum board to steel angle	568	12 in. O.C.

*2 1/4 in. min. total thickness of gypsum layers

Other Assembly Details:

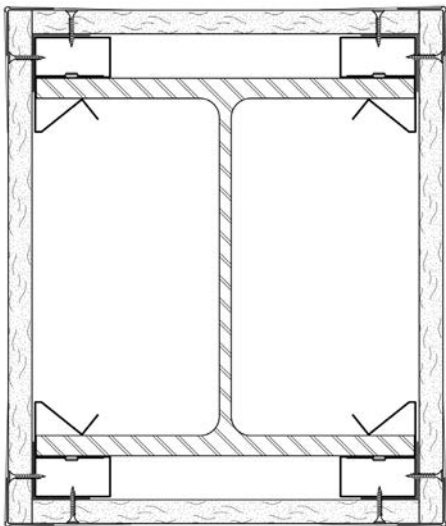
- Boards are applied vertically without horizontal joints.
- 1 1/4 in. x 1 1/4 in. 28 MSG angle laid in place over clip. (Angle cut 1 in. less than the assembly height. Secure angle with screw attaching the wallboard.)
- Splices in angle to occur over clips.
- Corner bead (0.058 in. thick at shoulder thickness, 1 7/8 in. legs attached to gypsum board using all-purpose ready mix joint compound.)
- Joint compound 1/16 in. thick to cover the corner beads and feathered out.
- Tie Wire, no. 18 SWG steel wire spaced 24 in. O.C. wrapped around third layer of gypsum board.
- Third and fourth layer of wallboard to attach to 2 in. x 2 in. 25 MSG steel angle.

Column and Beam Drywall Clip

Gypsum Board Attachment Device to
Column and Beam Enclosures



Columns



UL Fire-Resistive Assemblies

Column
Min. W10 x 49 (10 in. depth, 10 in. flange width, 5/16 in. web thickness, 9/16 in. flange thickness)
Grabber CB60 Clip Spacing: 48 in. O.C. and 1 1/4 in. from top and bottom of column

UL Design No.	Fire Resistance Rating	Gypsum Board Layers	Fastener Type	Applicable Grabber Fastener Item No.	Fastener Spacing
X528	1 hour	One layer, 1/2 in. Type C or 5/8 in. Type X Gypsum Board	1 in. Type S Screw Fasten gypsum board to steel clips or angles	168	24 in. O.C.

*2 1/4 in. min. total thickness of gypsum layers

Other Assembly Details:

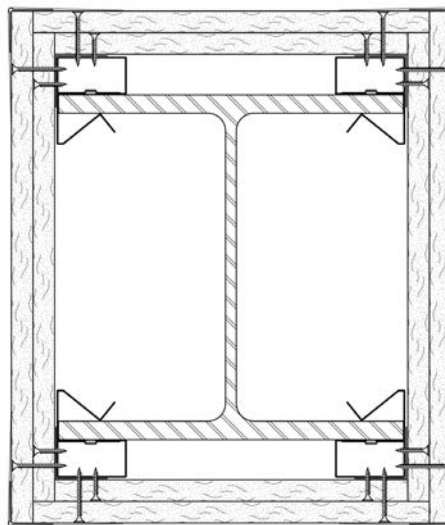
- Boards are applied vertically without horizontal joints.
- 1 1/4 in. x 1 1/4 in. 28 MSG angle laid in place over clip. (Angle cut 1 in. less than the assembly height. Secure angle with screw attaching the wallboard.)
- Splices in angle to occur over clips.
- Corner bead (0.058 in. thick at shoulder thickness, 1 7/8 in. legs attached to gypsum board using all-purpose ready mix joint compound.)
- Joint compound 1/16 in. thick to cover the corner beads and feathered out.

Column and Beam Drywall Clip

Gypsum Board Attachment Device to
Column and Beam Enclosures

GRABBER
CONSTRUCTION PRODUCTS

Columns



UL Fire-
Resistive
Assemblies

Column

Min. W10 x 49 (10 in. depth, 10 in. flange width, 5/16 in. web thickness, 9/16 in. flange thickness)

Grabber CB60 Clip Spacing: 48 in. O.C. and 1 1/4 in. from top and bottom of column

UL Design No.	Fire Resistance Rating	Gypsum Board Layers	Fastener Type	Applicable Grabber Fastener Item No.	Fastener Spacing
X528	2 hour	First layer, 1/2 in. Type C or 5/8 in. Type X Gypsum Board	1 in. Type S Screw Fasten gypsum board to steel clips or angles	168	24 in. O.C.
		Second layer, 1/2 in. Type C or 5/8 in. Type X Gypsum Board	1 3/4 in. Type S Screw Fasten gypsum board to steel clips or angles	568	12 in. O.C.

*1 1/8 in. min. total thickness of gypsum layers

Other Assembly Details:

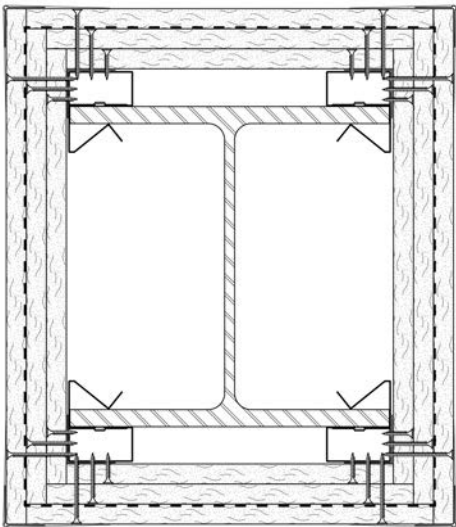
- Boards are applied vertically without horizontal joints.
- 1 1/4 in. x 1 1/4 in. 28 MSG angle laid in place over clip. (Angle cut 1 in. less than the assembly height. Secure angle with screw attaching the wallboard.)
- Splices in angle to occur over clips.
- Corner bead (0.058 in. thick at shoulder thickness, 1 7/8 in. legs attached to gypsum board using all-purpose ready mix joint compound.)
- Joint compound 1/16 in. thick to cover the corner beads and feathered out.

Column and Beam Drywall Clip

Gypsum Board Attachment Device to
Column and Beam Enclosures



Columns



UL Fire-
Resistive
Assemblies

Column

Min. W10 x 49 (10 in. depth, 10 in. flange width, 5/16 in. web thickness, 9/16 in. flange thickness)

Grabber CB60 Clip Spacing: 48 in. O.C. and 1 1/4 in. from top and bottom of column

UL Design No.	Fire Resistance Rating	Gypsum Board Layers	Fastener Type	Applicable Grabber Fastener Item No.	Fastener Spacing
X528	3 hour	First layer, 5/8 in. Type X Gypsum Board	1 in. Type S Screw Fasten gypsum board to steel clips or angles	168	24 in. O.C.
		Second layer, 5/8 in. Type X Gypsum Board	1 3/4 in. Type S Screw Fasten gypsum board to steel clips or angles	568	12 in. O.C.
		Third layer, 5/8 in. Type X Gypsum Board	2 1/4 in. Type S Screw Fasten gypsum board to steel clips or angles	968	12 in. O.C.

*1 7/8 in. min. total thickness of gypsum layers

Other Assembly Details:

- Boards are applied vertically without horizontal joints.
- 1 1/4 in. x 1 1/4 in. 28 MSG angle laid in place over clip. (Angle cut 1 in. less than the assembly height. Secure angle with screw attaching the wallboard.)
- Splices in angle to occur over clips.
- Corner bead (0.058 in. thick at shoulder thickness, 1 7/8 in. legs attached to gypsum board using all-purpose ready mix joint compound.)
- Joint compound 1/16 in. thick to cover the corner beads and feathered out.
- Tie Wire, no. 18 SWG steel wire spaced 24 in. O.C. wrapped around second layer of gypsum board.

Column and Beam Drywall Clip

Gypsum Board Attachment Device to
Column and Beam Enclosures

GRABBER
CONSTRUCTION PRODUCTS

Column and Beam Drywall Clip
PS1073 USA-ENG/Rev. 07-25

GRABBER CONSTRUCTION PRODUCTS, INC.
5255 W 11000 N., STE 100
HIGHLAND, UT 84003

(800) 477-8876 | GrabberPro.com

SAFETY FIRST: Wear appropriate personal protective equipment. Read applicable SDS and literature before handling and installation.

TECHNICAL INFORMATION: Technical information contained herein is furnished without charge or obligation and is given and accepted at the recipient's sole risk. Because conditions of use may vary and are beyond our control, Grabber Construction Products makes no representation about, and is not responsible or liable for, the accuracy or reliability of data associated with uses of any product described herein. Grabber Construction Products reserves the right to modify this document without prior notice.

© 2025 Grabber Construction Products, Inc. | All rights reserved | Printed in U.S.A.
The trademarks Grabber, PanelMax and Stylized G on Grabber Fasteners, are trademarks of Grabber Construction Products, Inc. Underwriters Laboratories (UL), iQ, Prospector, the UL logo and the UL mark are registered trademarks of UL LLC. UL fire-resistance-rated designs are published by UL LLC and referenced here for informational and compliance purposes. Use of UL design assemblies does not imply UL certification or endorsement.

